

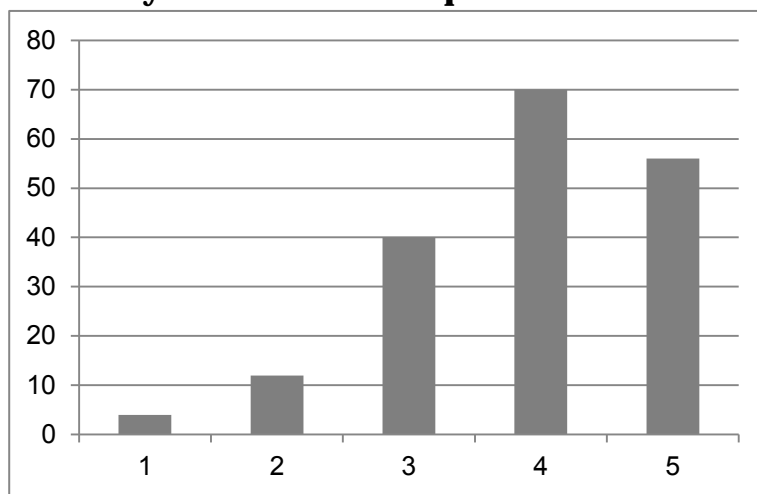
This report details feedback from community consultation on the New Johnsonville Library project. Information was gathered using a specific engagement website, which presented information regarding the project, and sought feedback via a survey link.

Consultation on the pre-concept design ran for 4 weeks throughout October and November 2015. 189 people took the opportunity to have their say.

Pre-concept Design

This section presents a summary of each survey question asked during the pre-concept design consultation period.

How do you feel about the plans for the new library so far? (1-5 rating)

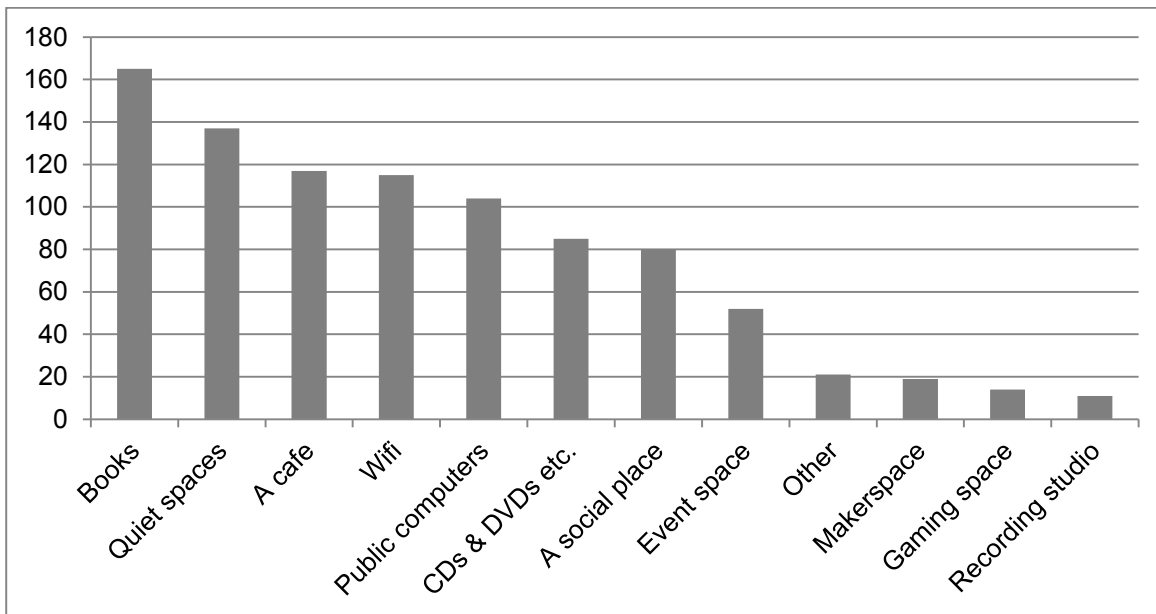


Of 182 responses, the average rating was 3.89.

Tell us why you feel this way about our plans

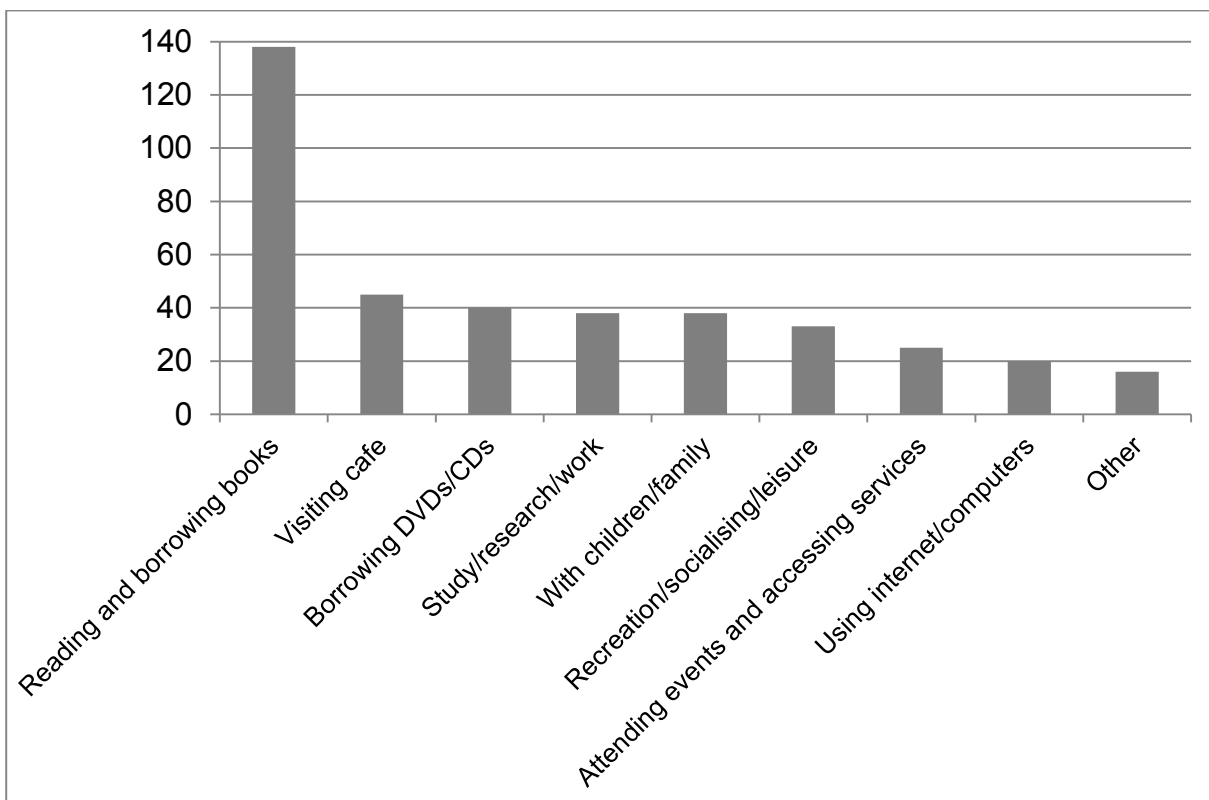
- There was support for the notion that the library would be a new community resource for the Johnsonville area
- There was a large amount of support for facility integration and the creation of a community hub
- There was some concern regarding accessibility and pedestrian safety, particularly across Moorefield Road
- Many people were concerned about a perceived lack of parking, noting that this is already an issue in the area, which may be exacerbated by introducing a new facility
- The prospect of a modernised building with expanded library offerings was supported
- Many people were excited about the increased size of the new library building
- They acknowledged the important role of the new library in supporting all of the Northern suburbs
- There was some comment about potential service offerings and use of the new building, primarily related to a new café facility
- Some people gave design suggestions for the new building, which included incorporating public art and Māori design elements.

What are the most important things to consider in the design of the new library?



n = 920. The 'other' category included parking, family friendly elements, accessibility, public toilets, and incorporating additional WCC services.

In what ways would you use the new library?

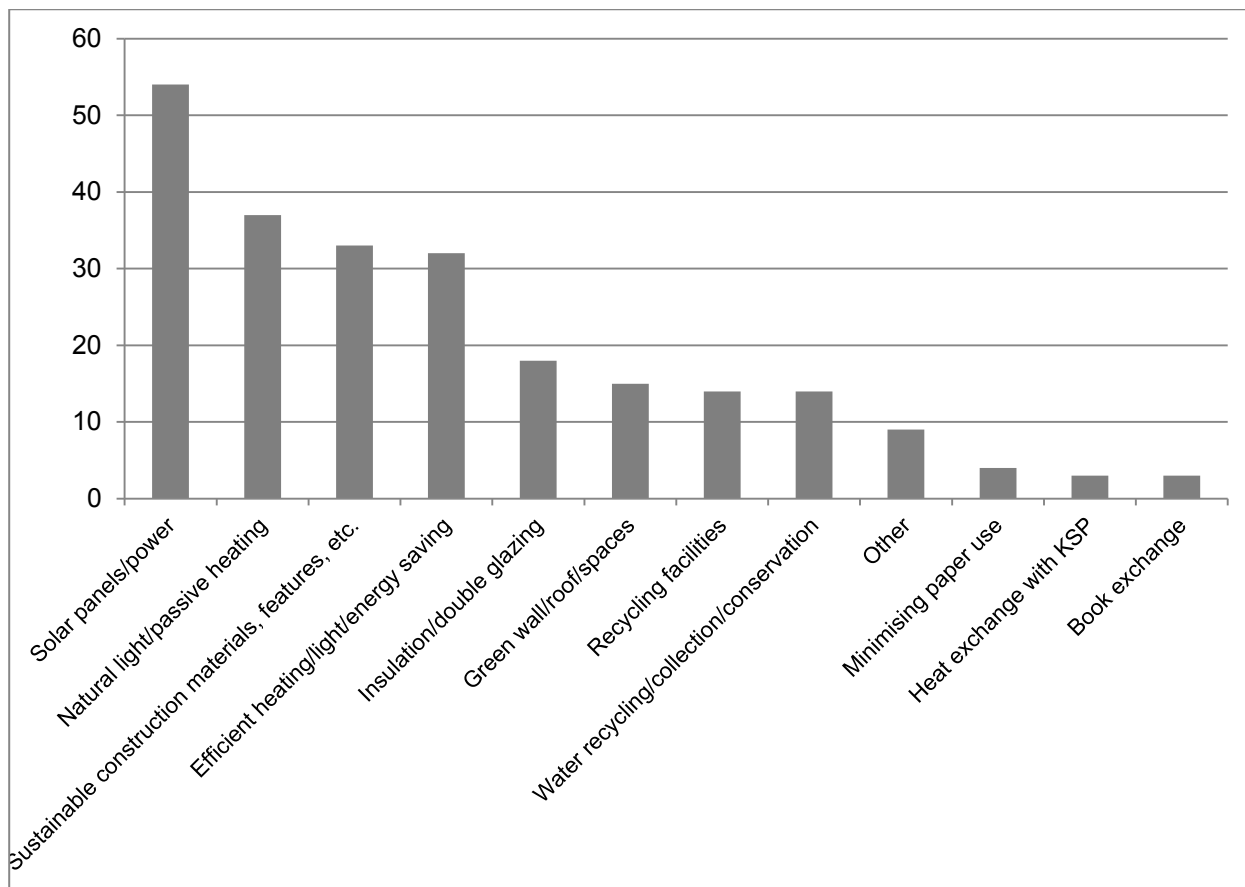


n = 393. The 'other' category included accessing public toilets, a cinema, and community information and services.

What makes you feel welcome when you visit a library?

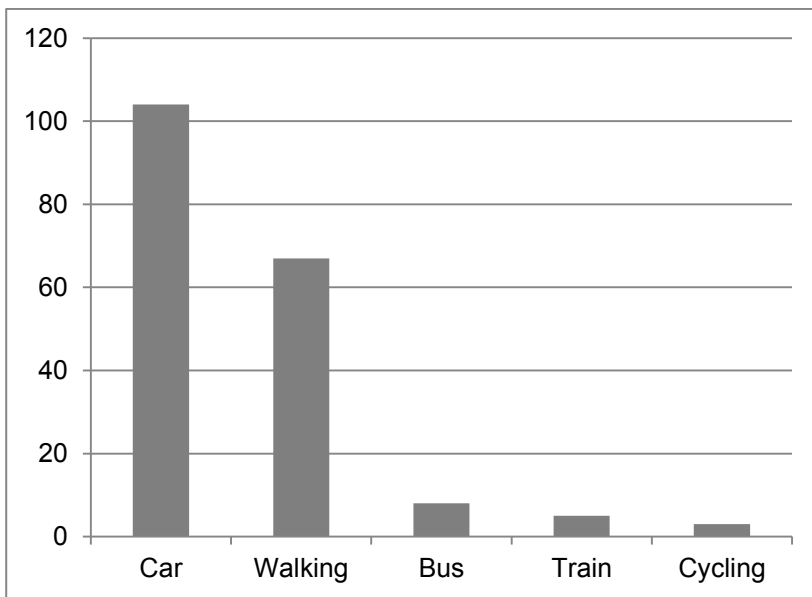
- The majority of people identified the library's atmosphere as the most important element in creating a welcoming facility
- Words used to describe the atmosphere of the building included: quiet, private, calm, peaceful, relaxing, clean, tidy, fresh, light, bright, colourful, open, airy, comfortable, warm, cosy, inviting, homely, soothing, buzzing, and safe
- The entrance to the library was identified as particularly important, with suggestions for this space including that it be inspiring, open, large, exciting, and grand
- They identified a specific need to ensure that the building is child-friendly and suitable for families
- The importance of ample comfortable chairs and spaces to sit was highlighted
- Many people identified the need for helpful and friendly staff
- The importance of the facility being user-friendly, in terms of access and ease of finding information/resources, was noted
- They also commented on a range of spaces and service offerings that could enhance the welcoming elements of the library. These included a café, multi-functional spaces, books, and new technologies.

What sustainability features would you like to see in the new library?



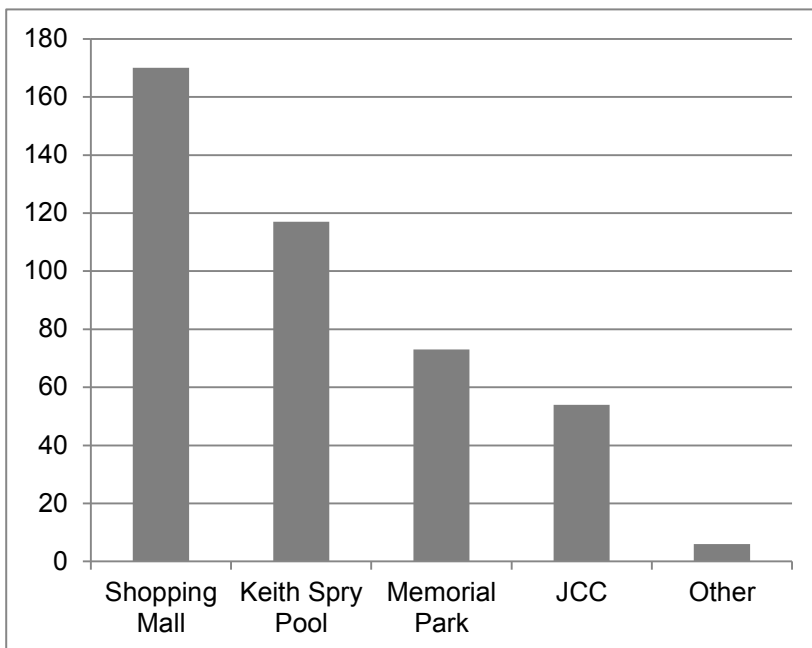
n = 236. The 'other' category included composting toilets, improved links to public transport, and relevant information resources.

How would you most often travel to the new library?



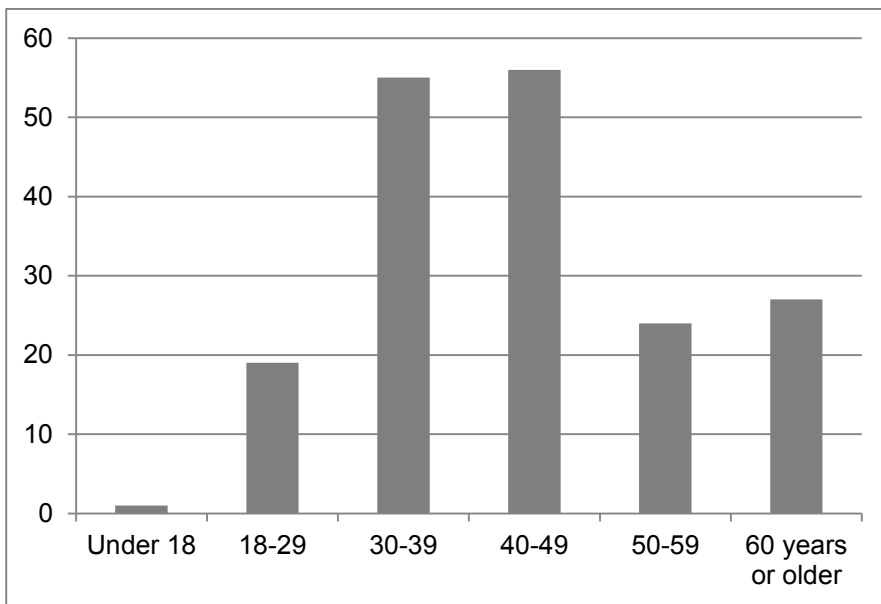
n = 187.

Which of the following near-by facilities would you consider using while visiting the library?



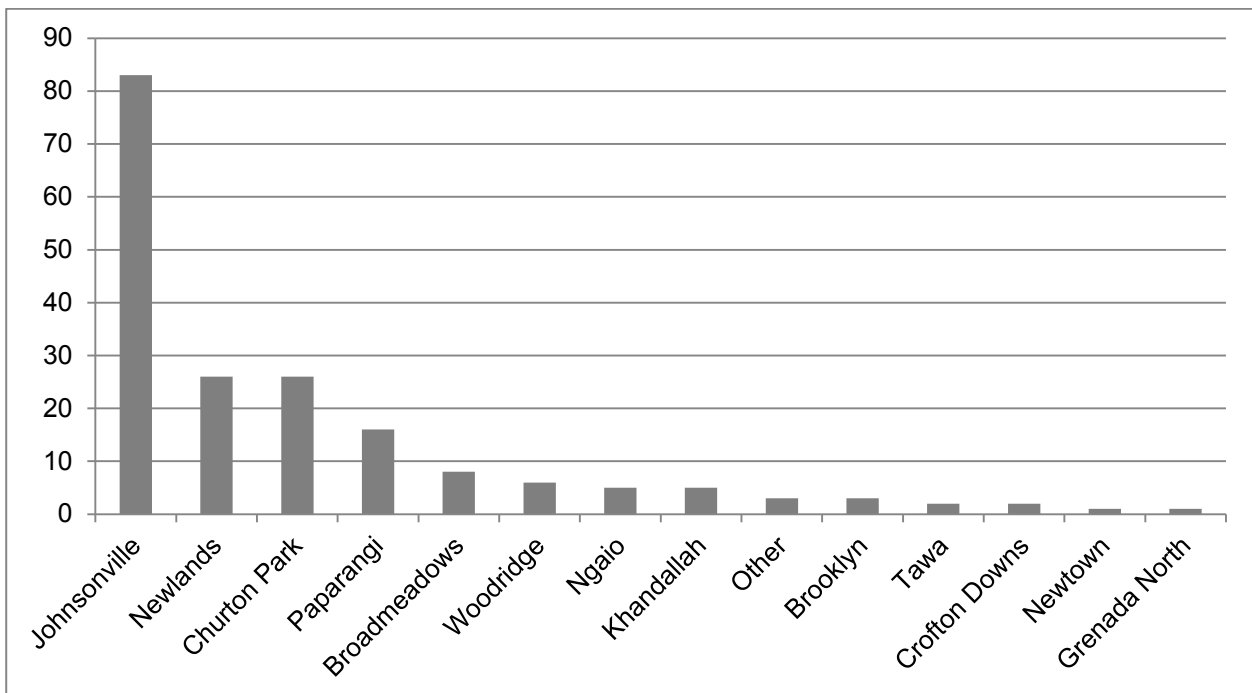
n = 420. The 'other' category included the bus stop, kindergarten, and medical centre/pharmacy.

About you – how old are you?



n = 182. Median age range = 40-49.

About you – what suburb do you live in?



n = 187.